

## THE **FRANKOMA** STORY

Frankoma Pottery has rightfully earned its position as America's outstanding creator of useful and beautiful earthenware. The colors, textures and crafted designs are created at Frankoma and are unique in American ceramics. Frankoma entered the field of ceramics in 1933. Our aim was to combine the traditional art of the Indians, the spirit of the American Pioneer and the creative tendencies of the youth of the Great Southwest, and mold them into useful pottery forms.

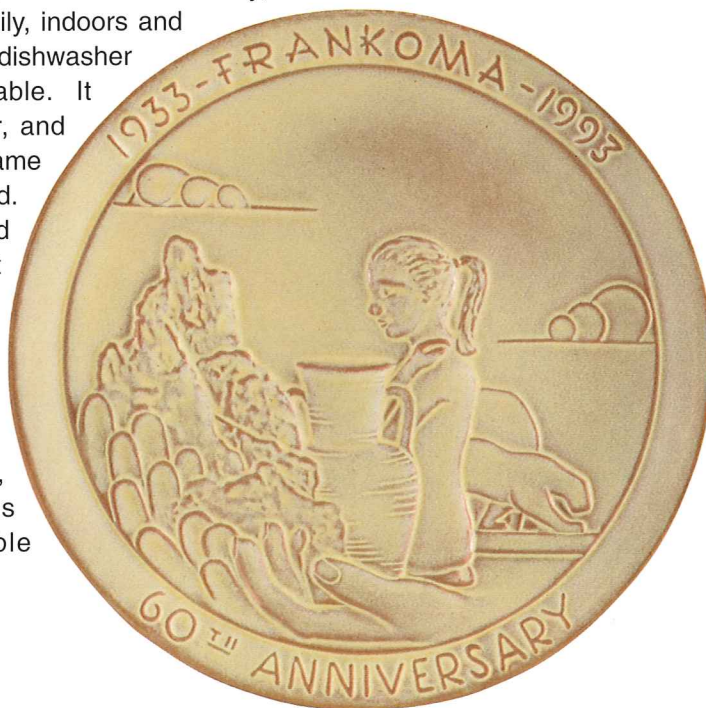
John Frank, originator of Frankoma, came to Oklahoma from Chicago in 1927. His teaching of Art and Pottery at the University of Oklahoma and his work with the geological survey - unearthing the Oklahoma clay deposits - brought together valuable material for his future venture of potting. In 1933, equipped with one small kiln, a butter churn for mixing clay, a fruit jar for grinding glazes and a few other crude tools and tables, Mr. Frank started a studio pottery in Norman, Oklahoma. It was necessary to continue teaching until enough ware was produced to prove that a product could be made of Oklahoma clays that was a contribution to art and ceramics and still salable. Resigning his teaching in 1936, he and his wife, Grace Lee, working side by side, set out on a venture of creating beautiful pottery for every day living. They felt the need of using Oklahoma clays for Oklahoma's first pottery. A clay from Ada was first used, then in 1954 a red burning clay dug at Sapulpa became the basis for all Frankoma ware. In 1938 the studio grew into a small factory as it moved from Norman to Sapulpa, where it is now. From its original 5,500 square footage, the plant has grown to its existing 79,000 square feet.

Frankoma demanded to make as fine a pottery as could be made considering the limitations of its materials. This meant constant research to take advantage of raw materials and processes as they are brought to light. A practice Frankoma still follows today. Because color is such an indispensable part of today's decor, Frankoma created a wide range of exciting colors and textures. Our Rutile Art Glazes which have identified Frankoma's unique tableware around the world have successfully been produced only on our colored earthenware clay.

Frankoma enjoys so many advantages over the more refined and delicate ceramic wares. Manufactured by a unique process, the clay body and colored glaze are fused and fired at the maturing point of the clay, then tempered as the product slowly cools. Because of its ruggedness and durability,

Frankoma Pottery can be used daily, indoors and outdoors. All of the products are dishwasher safe, oven proof and microwaveable. It keeps food and drinks hot longer, and food can even be served in the same dish in which it is baked or prepared.

Today, Frankoma is proud to continue the sculpted art heritage originated by Mr. Frank while blending a new world look using modern technology. This contemporary look, offered in a broad color palette and enhanced by High Definition Imaging, augments and strengthens Frankoma's traditional collectible products.



### 60th Anniversary Collector's Plate

"A Tribute to  
Sculpture in  
Ceramics"

*Sculpture  
by  
Joniece Frank*

### CARING FOR TERRA COTTA DINNERWARE

Terra cotta earthenware is a clay product that has been fired in temperatures that approach 2,000°F and may have unglazed surfaces. The firing process does not completely vitrify (become glass-like) the clay; therefore, it may have porosity and absorb some moisture.

Terra cotta dinnerware can be placed through normal dishwashing processes. It should be allowed to dry so that any moisture may evaporate from the pores of the terra cotta. If stains adhere to the terra cotta and normal dishwashing is ineffective, a pyrolytic process may be used. An oven with a self-cleaning cycle that reaches 800° or more (pyrolytic) will bake stains from the surface of the terra cotta.

# FRANKOMA

**Handcrafted American Giftware Since 1933**

**A Division of Frankoma Industries, Inc.**

**Box 789 • 2400 Frankoma Road  
Sapulpa, OK 74067**

**918-224-5511 • 800-331-3650**

**Fax 918-227-3117**